



# H-BOAT WORLD CHAMPIONSHIP

31.07 – 03.08. 2018

SANDEFJORD – NORWAY

## SAILING INSTRUCTIONS (SI)

Version: 1.1

**Organizing Authority:**

Sandefjord Seilforening in conjunction with the International H-boat Association



The notation '[DP]' in a rule in the SI means that the penalty for a breach of that rule may, at the discretion of the protest committee, be less than disqualification.

## **1 RULES**

- 1.1 The regatta will be governed by the rules as defined in The Racing Rules of Sailing.
- 1.2 H-boat World Championship rules will apply.
- 1.3 All H-Boats participating in a World Championship must have a valid certificate. Subject to prior approval of the Race Committee, a boat chartered or loaned for the event and declared at the time of entry or registration, may have a sail number which is different from the registered number of the hull provided that the sail number declared shall be the national letters and numbers of the helmsman's country and different sail number of any other boat competing in the event.
- 1.4 If there is a conflict between languages the English text will take precedence.

## **2 NOTICE TO THE COMPETITORS**

- 2.1 Notices to the competitors will be posted on the official board at the Race Office.

## **3 CHANGES TO SAILING INSTRUCTIONS**

- 3.1 Any change to the sailing instructions will be posted before 09:00 the day the changes will take effect. Any change to the schedule of races will be posted at the notice board until 20:00 on the day before it will take effect.

## **4 SIGNALS MADE ONSHORE**

- 4.1 Signals made onshore will be displayed at the signal mast situated at northwest quay on Seilerholmen.
- 4.2 When flag AP is displayed onshore, "1 minute" is replaced with "not less than 30 minutes" in the race signal AP.
- 4.3 When flag Y is displayed onshore the rule 40 applies as long as the boats are offshore. This change the Part 4 Introduction. [DP]

## 5 SCHEDULE

- 5.1 Registration, Measurement and inspection at Veløyveien 1, Sandefjord.  
Sunday July 29th from 12:00 to 20:00 and  
Monday July 30th from 08:00 to 18:00

- 5.2 Dates of racings and Times:

Date		Skipper meeting	First possible warning signal	Last possible warning signal
30.07	Opening at 19:00			
31.07	Racing	09:00*	11:00*	
01.08	Racing	09:00*	11:00*	
02.08	Racing	09:00*	11:00*	17:00
03.08	Backup racing day	09:00*	11:00*	16:00

\*) Unless changed by the race committee according to the SI.

- 5.3 Number of races:  
A maximum of 10 races will be sailed with a maximum of 4 races per day. One extra race per day may be sailed, provided that the change is made according to instruction 3.
- 5.4 To alert boats that a race or sequence of race will begin soon, the orange starting line flag will be displayed at least five minutes before a warning signal is made (one sound).

## 6 CLASS FLAG

- 6.1 Signal Flag E used as class flag.

## 7 RACING AREAS

- 7.1 The racing areas will be located at the outer part of Sandefjordsfjorden.

If the racing committee decides to use a different race area for the first race of the day, it will be announced on the information board outside regatta office. The Race area may also be moved while boats on water. The starting vessel will then show signal flag L and lead the boats to the new area.

Attachment A shows a map of the racing areas, where the primary racing area is noted A.

Deviation from the race areas shown on map may occur and will not give right to redress.

## 8 THE COURSES

- 8.1 The diagrams in Attachment "B" show the courses, including the approximate angles between legs, the order in which marks are to be passed, the side on which each mark is to be left and the respective course signals.
- 8.2 No later than the warning signal, the starting vessel will display the course to be sailed by hoisting the respective numeral pennant, and approximate compass course for the first leg.

## **9 MARKS**

- 9.1 The marks numbered 1, 2 and Offset mark will be yellow/orange cylindrical buoys. The mark numbered 3 will be a buoy with orange flag (same as start buoy).
- 9.2 New marks, as provided in SI 11.1, will be yellow cylindrical buoys with black bands.
- 9.3 The start- and finishing marks will be floating poles and race committee vessel with an orange or blue flag according to 10.1 and 12.
- 9.4 A race committee vessel signaling a change of a leg of the course is a mark as described in SI 11.2.

## **10 START**

- 10.1 The starting line will be between the mast with an orange flag on the starting vessel at starboard end and buoy with orange flag on port end.
- 10.2 A boat starting later than 4 minutes after start signal given will be scored DNS (Did Not Start) without a hearing. This changes rule A4.

## **11 CHANGE OF THE NEXT LEG OF THE COURSE**

- 11.1 To change the next leg of the course, the race committee will lay a new mark (or move the finishing line) and remove the original mark as soon as practicable. When in a subsequent change a new mark is replaced, it will be replaced by an original mark
- 11.2 Except at a gate, boats shall pass between the race committee vessel signalling the change of the next leg and the nearby mark, leaving the mark to port and the race committee boat to starboard. This changes RRS 28.

## **12 THE FINISH**

- 12.1 The finishing line will be between the finishing mark buoy with blue flag on starboard end and the blue flag on the finishing vessel on port end.

## **13 PENALTY SYSTEM**

- 13.1 Rule 44.1 is changed so that the Two-Turns penalty is replaced by the One-Turn penalty.

## **14 TIME LIMITS AND TARGET TIMES**

The maximum time for the first boat to complete the race is 90 minutes

Boats not to complete the race later than 20 minutes after the first boat completed the race will be noted DNF (Did Not Finished) without hearing. This changes rules 35, A4 and A5

## **15 PROTESTS AND REQUESTS FOR REDRESS**

- 15.1 Protest forms are available at the race office. Protests and requests for redress or reopening shall be delivered within the appropriate time limit.

- 15.2 The protest time limit is 60 minutes after the last boat has finished the last race of the day or the race committee signals no more racing today, whichever is later.
- 15.3 Notices will be posted no later than 30 minutes after the protest time limit to inform competitors of hearings in which they are parties or named as witnesses. Hearings will be held in the protest room, located at regatta office, beginning as soon as possible after the protest time limit.
- 15.4 Notices of protests by the race committee, technical committee or protest committee will be posted to inform boats under rule 61.1(b).
- 15.5 Breaches of SI 17, 19, 21, 25 and 26 will not be eligible for a protest by a boat. This changes RRS 60.1(a). Penalty for breaking these rules might be less than disqualification if decided by the protest committee.
- 15.6 On the last scheduled day of racing a request for reopening a hearing shall be delivered:
- a) within the protest time limit if the party who request a reopening was informed of the decision the day before
  - b) no later than 30 minutes after the party asking for a reopening was informed of the decision that same day.
- 15.7 On the last scheduled day of racing a request for redress based on a protest committee decision shall be delivered no later than 30 minutes after the decision was posted. This changes rule 62.2.

## **16 SCORING**

- 16.1 5 races are required to be completed to constitute a World Championship-series.
- 16.2 a) When fewer than 5 races have been completed, a boat's series score will be the total of her race scores.
- (b) When 5 to 8 races have been completed, a boat's series score will be the total of her race scores excluding her worst score.
- (c) When 9 or more races have been completed, a boat's series score will be the total of her race scores excluding her two worst scores.

## **17 SAFETY REGULATIONS**

- 17.1 The race areas might partly be in ferry/ship fairway. All competing- and support boats to hold clear of this traffic and follow directions given by the safety boats. [DP]
- 17.2 A boat that retires from a race shall inform the race committee as soon as possible. [DP]

## **18 OFFICIAL BOATS**

- 18.1 Official boats will be marked with yellow flags (except start/finish boat marked with orange and/or blue flag)
- Jury boats will be marked with yellow or white flags with the letters J or JURY.

## **19 SUPPORT BOATS**

- 19.1 Team leaders, coaches and other support personnel shall stay outside of areas where boats are racing and any mark from the time of a preparatory signal until all boats have finished or retired or the race committee signals a postponement or abandonment.
- 19.2 Support boats must, if the race committee directs so, provide emergency support.
- 19.3 Support and Coaches Boats shall be registered at the Race Office before the beginning of the event and comply with the Support Boat Regulation for the regatta.

## **20 REPLACEMENT OF CREW OR EQUIPMENT**

- 20.1 Substitution of competitors will not be allowed without prior written approval of the race committee
- 20.2 Substitution of damaged or lost equipment will not be allowed unless authorized by the race committee. Requests for substitution shall be made to the committee at the first reasonable opportunity

## **21 EQUIPMENT AND MEASUREMENT CHECKS**

- 21.1 A boat or equipment may be inspected at any time for compliance with the class rules and sailing instructions. On the water, a boat can be instructed by a race committee equipment inspector or measurer to proceed immediately to a designated area for inspection.

## **22 EVENT ADVERTISING**

- 22.1 Boats shall display event advertising supplied by the organizing authority. The organizing authority will supply the instructions for their use.

## **23 TRASH DISPOSAL**

- 23.1 Trash may be placed onshore in trash containers and offshore aboard support boats.

## **24 HAUL-OUT RESTRICTIONS**

- 24.1 Boats shall not be hauled out during the regatta except in case of damages, with a written permission of the race committee. [DP]

## **25 RADIO COMMUNICATION**

- 25.1 Except in an emergency, a boat that is racing shall not make voice or data transmissions and shall not receive voice or data communication that is not available to all boats. This restriction also applies to mobile telephones. [DP]

## **26 DIVING EQUIPMENT AND PLASTIC POOLS**

26.1 Underwater breathing apparatus and plastic pools or their equivalent shall not be used around keel boats between the preparatory signal of the first race and the end of the regatta. [DP]

## **27 PRIZES**

27.1 Prizes will be given as follows:

- IHA Trophy for the World Champion 2018
- IHA Medals for helmsman and crew members of the first three boats
- Prizes to helmsmen and crew members for at least the ten first boats in the championship.

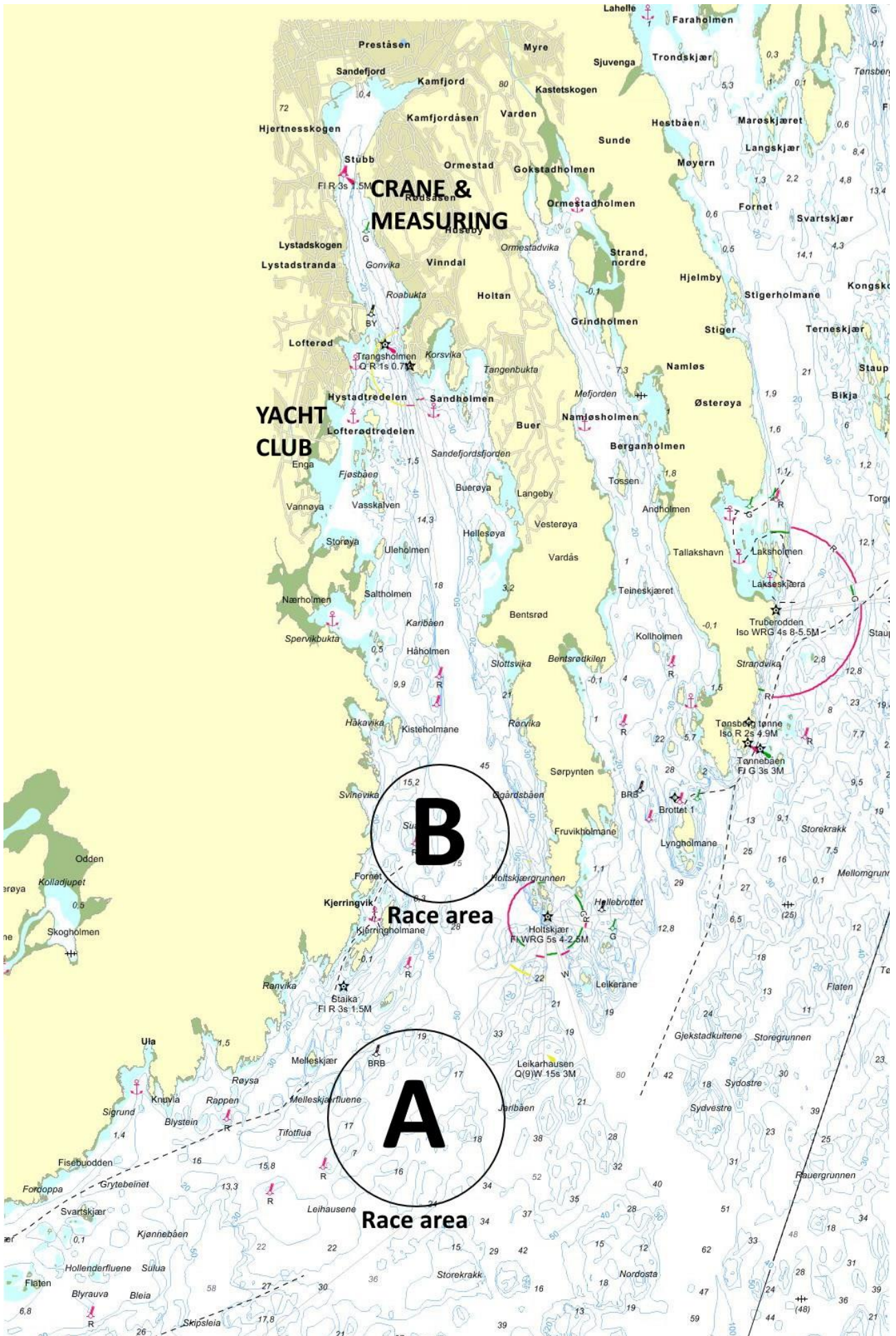
## **28 DISCLAIMER OF LIABILITY**

28.1 Competitors participate in the regatta entirely at their own risk. See RRS 4, Decision to Race. The organizing authority will not accept any liability for material damage or personal injury or death sustained in conjunction with or prior to, during, or after the regatta.

## **29 INSURANCE**

29.1 Each participating boat shall be insured with valid third-party liability insurance with a minimum cover of 1.500.000 € per incident or the equivalent. Each boat shall be able to show proof of insurance coverage at registration.

# Attachment A

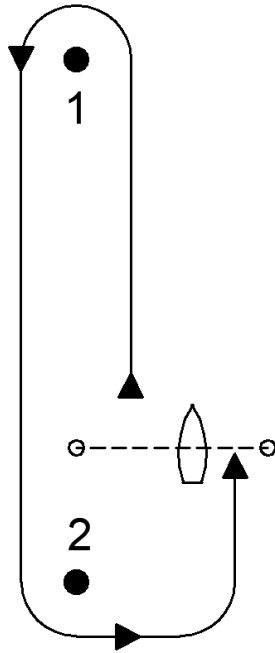




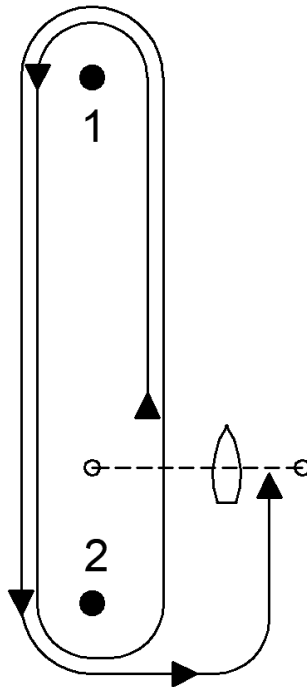
# Attachment B - COURSES

The diagrams show the sailing legs with approximate angles in between, the order for passing the marks and at which side to pass the marks. Length of the races defined for each race by the race officer. Deviations from length of legs or angles in between in the diagrams does not give the right to requests for redress.

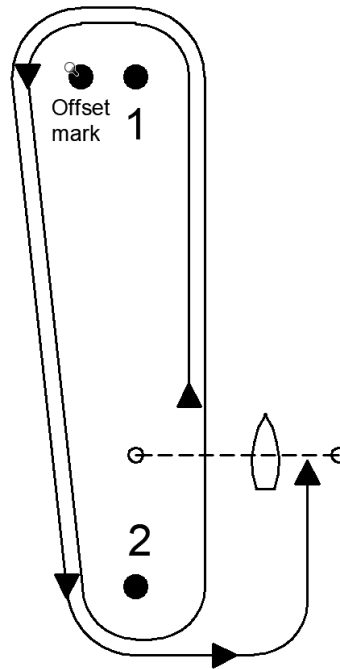
- If signal flag 1 is shown: Start – 1 – 2 – Finish



- If signal flag 2 is shown: Start – 1 – 2 – 1 – 2 – Finish

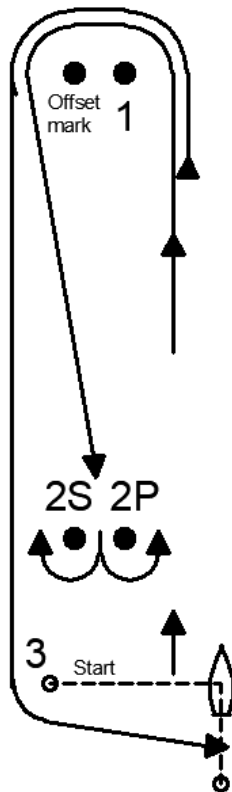


- If signal flag 3 is shown: Start – 1 – Offset mark – 2 – 1 - Offset mark – 2 – Finish



- If signal flag 4 is shown:

Start – 1 – Offset mark – 2 (gate) – 1 – Offset mark – 3 – Finish





## Attachment C

# SUPPORT BOAT REGULATIONS

### Support Boats shall carry the following Equipment on board

- Life jackets / buoyance aids for the driver and all passengers
- Safety lanyard / automatic engine immobiliser
- VHF radio capable of receiving instruction from Safety or Race Committee
- Device for making a sound signal (e.g. Whistle)
- Tow rope (minimum 15m long and 10mm thick)
- Knife

### Support Boat Regulations

- Support Boats shall be registered at the Race Office who will hand out marking to be carried clearly displayed on the boat.
- Support Boats shall comply with local regulations and speed limits
- Support Boats shall follow Race Committee instructions on the designated VHF channel
- Safety lanyards shall be worn at all times when the engine is running
- Life jackets / buoyance aids shall be worn at all times when afloat according to norwegian regulations
- Support boats shall:
  - Not be in way of any boats racing or in start/finish area. Safety distance at least 50 meters
  - Keep clear of any mark of the course by at least 50 meters while boats are in the vicinity of mark
  - Not produce waves that can influence the racing boats.
  - Show overall considerations for all boats part of the race or organizing committee.